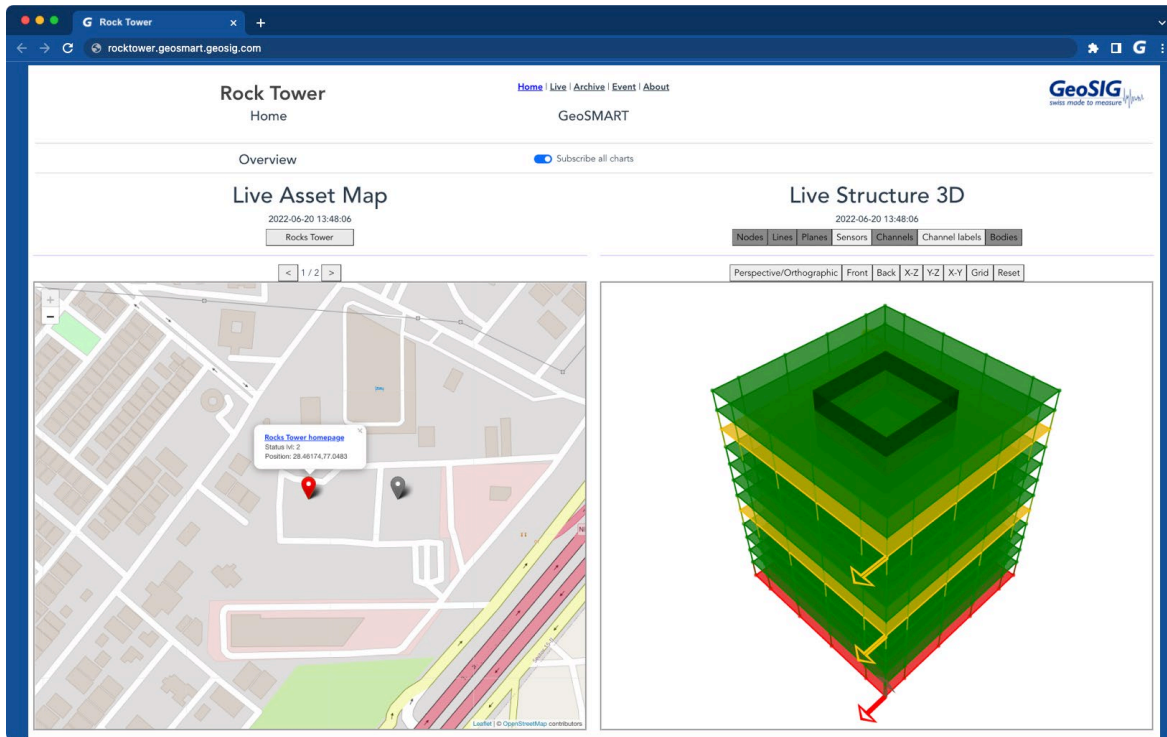


GeoSMART Software

GeoSMART is an innovative graphical application that provides tools for **real-time structural health monitoring** for civil engineering structures. GeoSMART, with its “smart” features, can monitor and display the status of a structure that is instrumented with GeoSIG measuring instruments.



Main Features

- Support for any type of sensor such as acceleration, velocity, displacement, tilt, wind, temperature, strain, and many more.
- User-friendly web-interface for an intuitive experience.
- 3D representation of any structure with live status.
- Interactive zoom, rotate, pan, visibility and projection.
- Multiple structures on live interactive map.
- Real-time continuous data acquisition and processing.
- Storage and direct download of all data and graphics.
- Data export for long-term storage.
- Sliding window-based continuous frequency analyses: Amplitude, Spectrogram and Response Spectra.
- Rigid body motions in translations and rotations.
- Interpolations for non-instrumented areas.
- Interstory drift ratios and torsion.
- Exceedance of predefined threshold levels or curves.
- Plot of archive data and statistical information.
- Live screen indicators and HTML formatted emails.
- Individualised notifications to users / user groups.
- Customisable messages such as action plans.
- Reports including actual images of plotted graphics.
- Hardware relays to start or shutdown any process.
- Advanced user accessible powerful database to fetch and externally manipulate the stored data.

