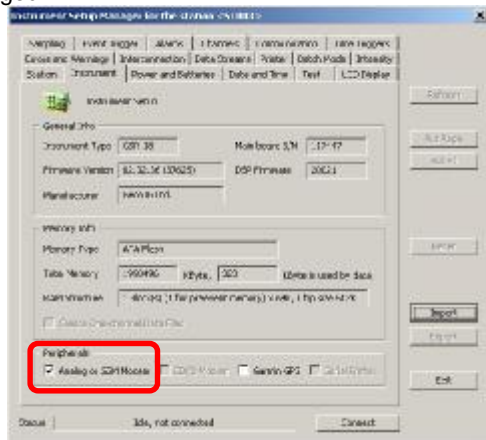


# GSM Modem Installation Procedure

## Installing an External GSM Modem with a GSR

1. Turn the instrument on and connect to it with GeoDAS using the direct RS-232 connection.
2. Make sure that "Analog or GSM Modem" option under the Instrument tab is enabled. Otherwise the baud rate cannot be changed.



3. The following settings must be adjusted and should be set as the following:

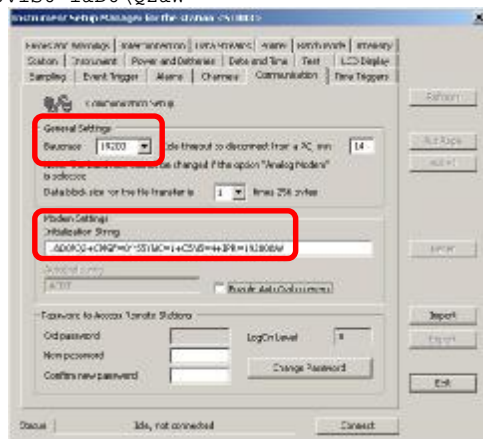
- Baudrate: 19'200
- Modem init string:

For GSR 12/16/18 series:

AT&F0E0V1S0=1&D0\Q2+CMGF=0^SSYNC=1+CSNS=4+IPR=19200&W

For GSR-24 series:

AT&F0E0V1S0=1&D0\Q2&W



4. Now that the recorder is configured to operate with the external modem, you can disconnect from it and connect the external GSM modem with the modem RS-232 cable supplied.
5. Connect also the modem power supply and the GSM antenna to the modem.



Remove the PIN code protection from your SIM card.

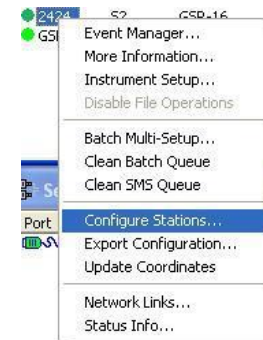


Insert the SIM card before turning the modem on.



Restart the recorder once the modem is turned on and connected to the RS-232 connector of the recorder.

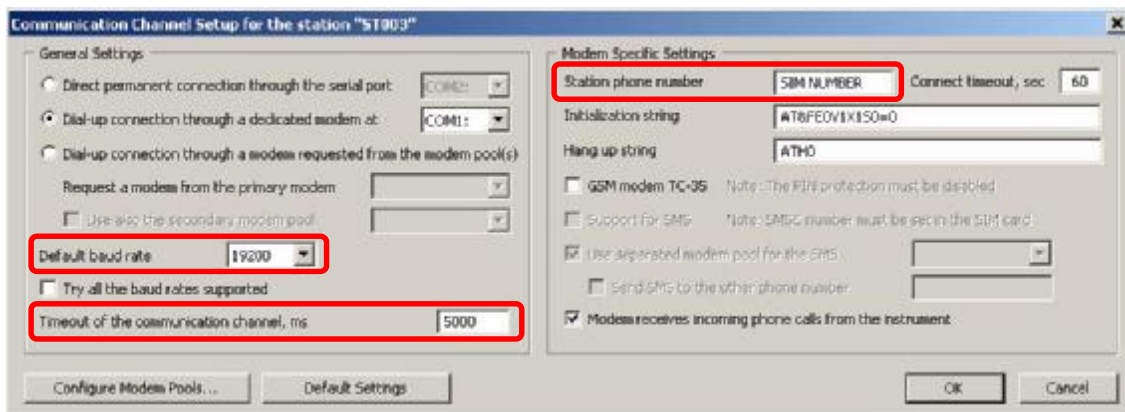
6. Now, you also need to change the GeoDAS configuration to connect to the instrument through a modem connection, as follows.
7. Right-click on the stations list and select "Configure Stations..."



8. Right-click on the station to be configured and select "Comm Channel..."



9. Change the connection type to a dial-up connection through a dedicated modem and choose the correct COM port (the one where the GSM modem is connected), also set the connection speed to 19'200 and enter the appropriate phone number for the GSM. The recommended (default) modem init string in GeoDAS is AT&F0E0V1X1S0=0



10. Click OK on settings and on the stations list. You are now able to connect to the instrument via GSM connection.



**In case of a problem please check our web site [www.geosig.com](http://www.geosig.com) or contact us at [info@geosig.com](mailto:info@geosig.com). Many thanks for choosing GeoSIG Ltd. instruments and accessories. We hope that you will enjoy working with our instruments.**