

## How to enable datastream with a GSR-18 in GeoDAS

### 1. Configuring the station in GeoDAS

- Go to the Station configuration.
- Go the work options properties.
- Enable the “Acquire data from the stream” option.

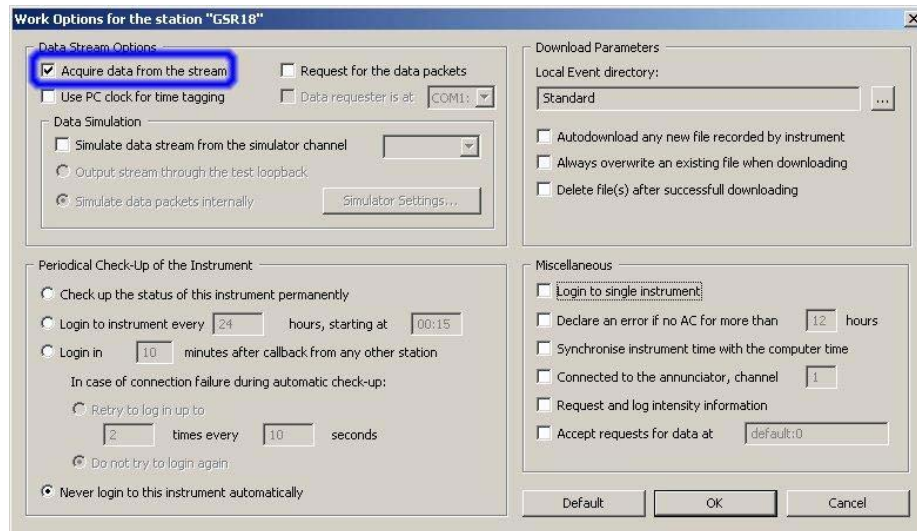


Figure 1 Work options of instrument

### 2. Configure the GSR-18

- Connect to the instrument.
- Set the communication speed to 38400 bauds.

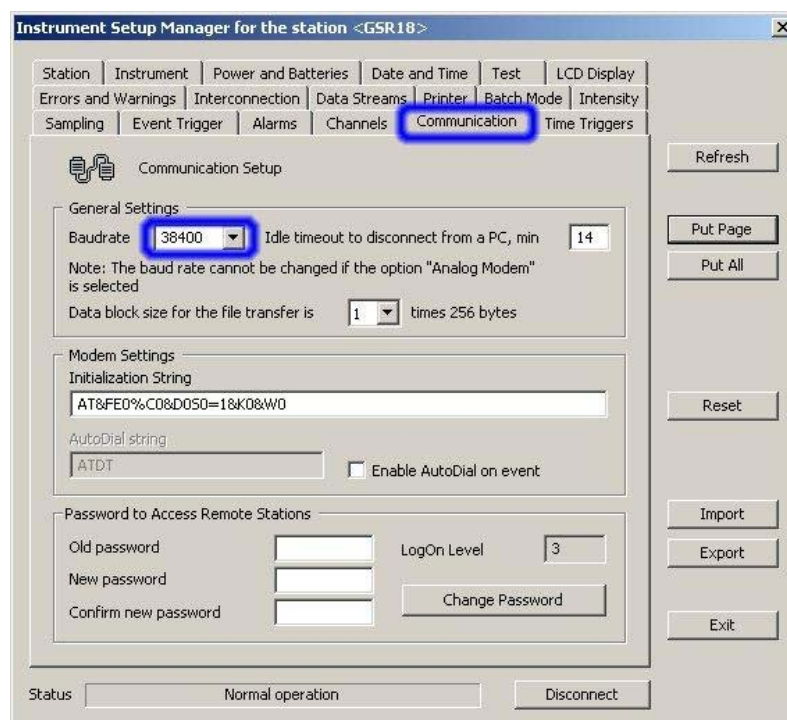


Figure 2 Communications options

- Set the Datastream options as shown in the picture.

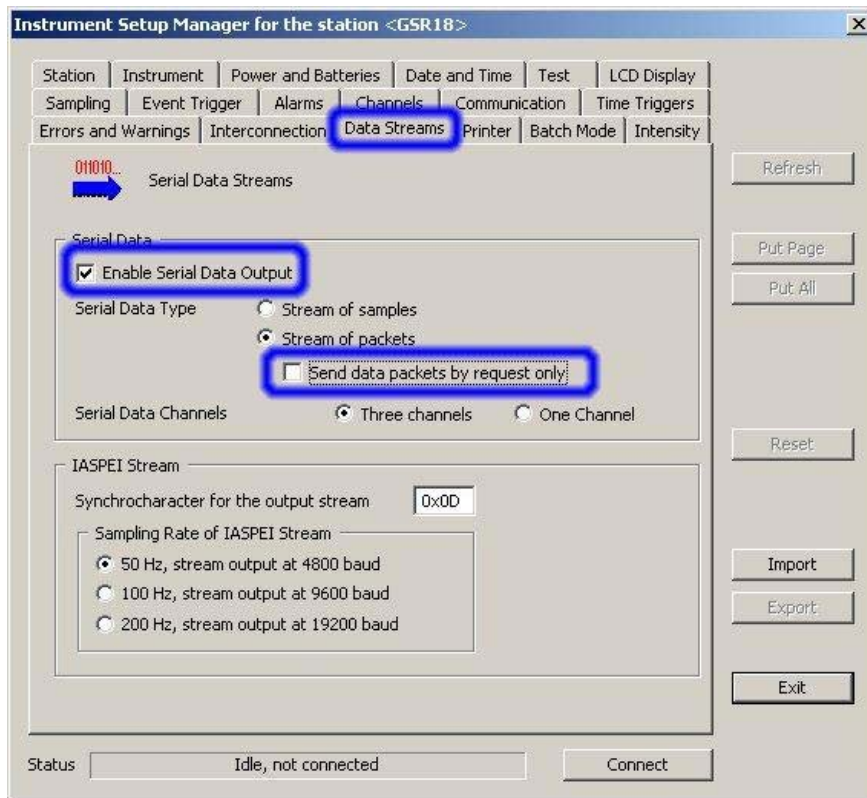


Figure 3 Data Streams options

- Log out from instrument.

### 3. Viewing the datastreams

- Select the station you want to view the datastream.
- Click on “Data stream” button.

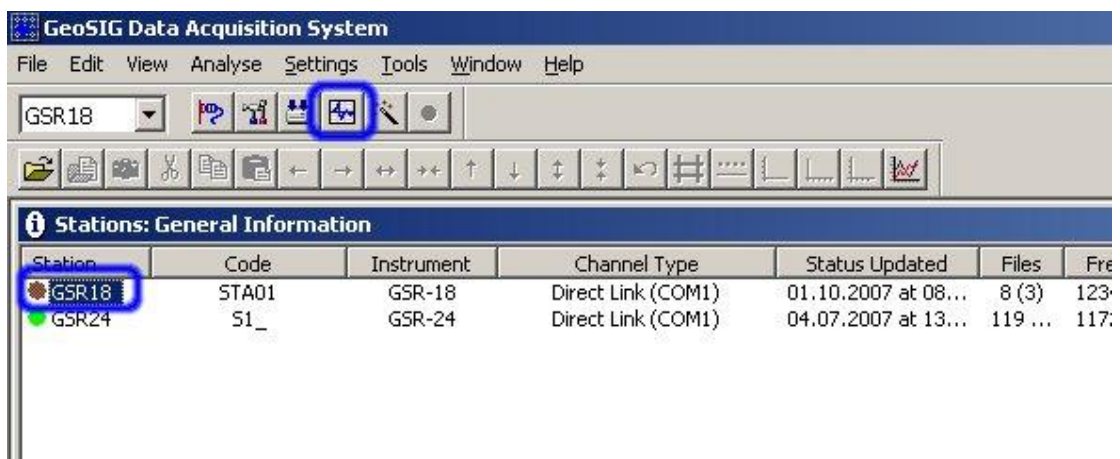


Figure 4 Enabling Data Stream window

- Stream windows will appear and data would be displayed.

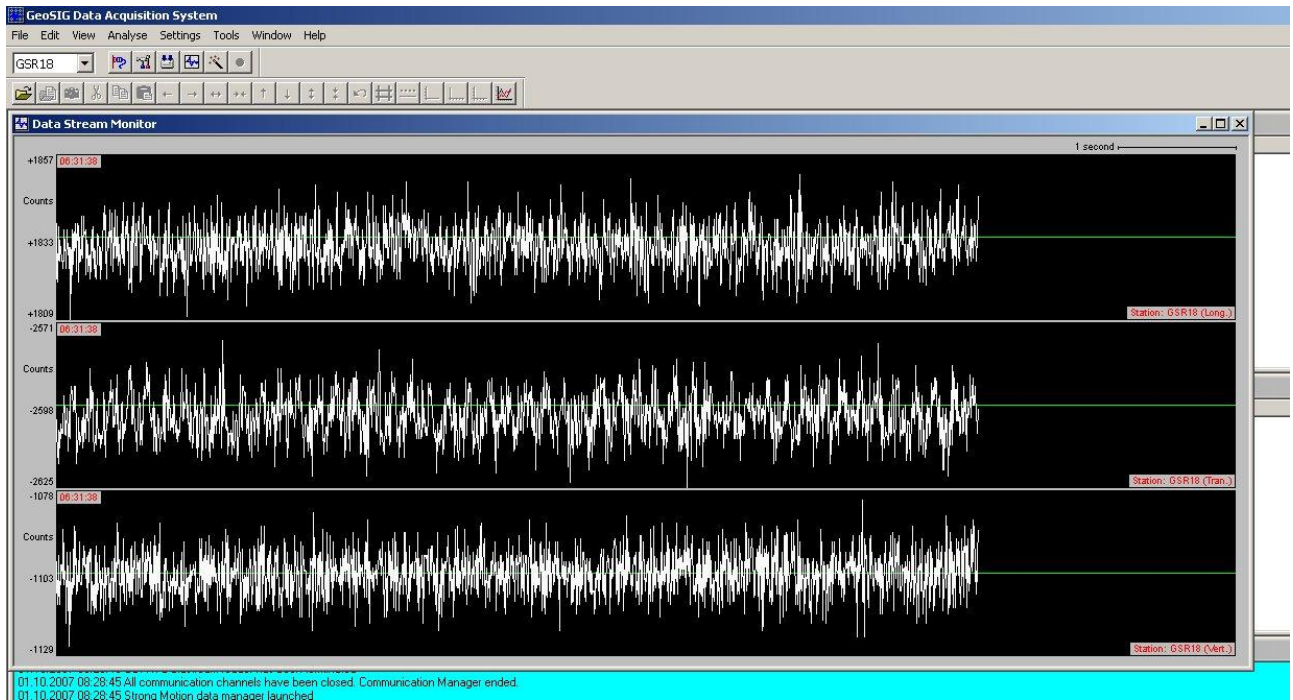


Figure 5 Datastreams window